

NIMSAKÎL

EY GÜL BÜ Nİ İYİ . . . İYİ Şİ Mİ DE MED . . .  
EY HER GÜ Lİ NE . . . NEVÂ GÜL RU Nİ . . .

SÂ Kİ . . . GÜ . . . GÜL İ ZAR . . .  
YÂ Dİ . . . HE Mİ . . . Mİ Dİ HE . . .

KÜ . . . CA NİM EY BÂ Dİ BE HA . . .  
VE Lİ . . . CA NİM EY GÜ Şİ SÜ HA . . .

HÂ Rİ Mİ VE ZED . . . BA DE . . . HO . . .  
HANŞİ NEV KÜ CÂ . . . Dİ DE . . . İ . . .

HOF GÜ VAR . . . KÜ . . . CA NİM AH TE NE NEN Nİ  
İ Tİ BAR . . . KÜ . . . CA NİM

TE NE NEN Nİ TE NE NEN NEN NEN NEN NEN Nİ YELLE LEL LEL LEL LEL Lİ . . .

YE LE LE . . . LE LE LEL Lİ TE RE LE . . . LE LE . . . LE LEL Lİ AH YA LA

HEL LEL Lİ YEL LE LEL LEL LEL LEL LEL LEL Lİ . . . A MAN YE LE LEL LE LEL LE

LEL Lİ YE LE LEL LEL LEL LEL LEL Lİ BA DE İ HO . . .  
Dİ DE İ ? . . .

HOF GÜ VAR . . . KÜ . . . CA NİM CA NİM  
İ Tİ BAR . . . KÜ . . .

EY MEC Lİ Şİ BE . . . BEL Mİ İŞ . . . RÂ . . .

CA NİM GA Lİ YE İ . . . AH MU RAD . . .

NEVÂ KÂR - 2

NIST . . . CA NIM . . . . . TEN TEN NE NEN NEN NEN NEN NEN NI TEN

TEN NÉ NÉN NÉN NÉN NÉN NÉN NI TEN TÈ RÈ LÈ LÈL LI YÈ LÈ LÈL LÈL LÈL LÈL LÈL LI ...

... TERE LEL LEL LEL LEL LEL LI YA LA YEL LEL LI - - - - -

GA LI .. YE I .. . . . . AH MU RAD . . . . NIST . . . . CA NIM

*DEVRAIRÉ VAN*



AH DE RE DIL LA DI DE RE . . DIL . . .

LA . . . . . TĒ NĒ TA . . . . . DĪR NEY - - - - .

DE RE PIL LA DI DE RE

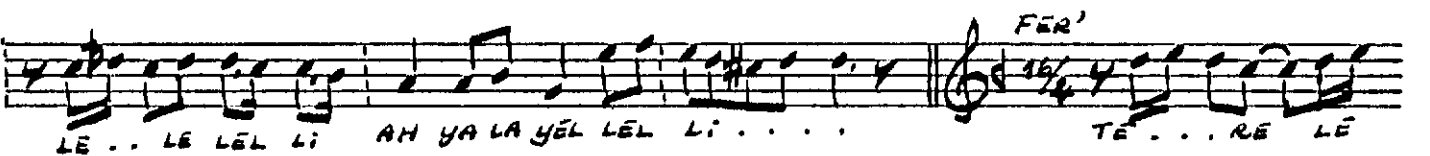
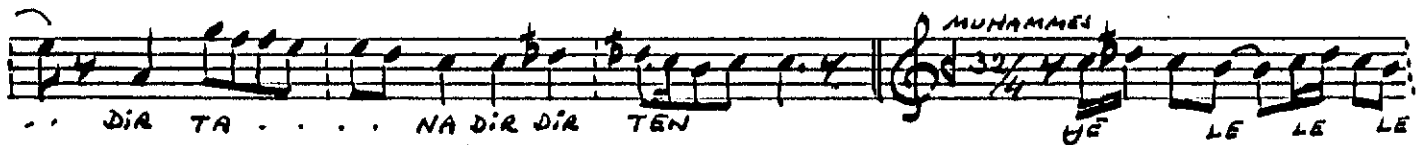
DIL . . . LA . . . . . TE NĒ TA DIR NEY

Handwritten musical notation for the first line of the song. It features a treble clef, a key signature of one sharp (F#), and a 2/4 time signature. The melody is written on a five-line staff. Below the staff, the lyrics "CA - - - - NIM" are written under the first measure, and "EY SA HI DI KUD .." are written under the subsequent measures. The word "REMEL" is written above the staff, indicating a repeat sign.

NI NE SED BE . . . . . BEN DI NI KA BET . . . . .

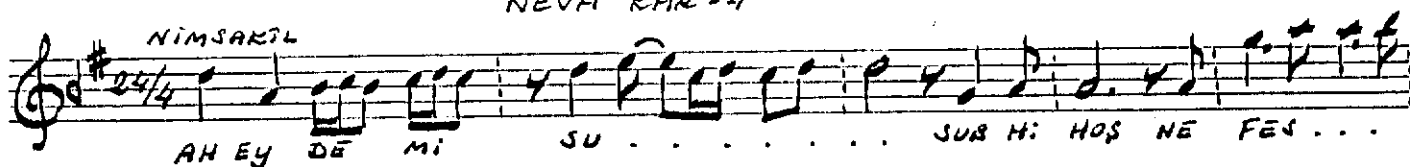
VEY MÜR Gİ BE HİŞ . . . . . Tİ . . . . . Kİ Dİ HED DA . . . . .

... DA NEVÜ A ... GET



## NEVÂ KÂR-4

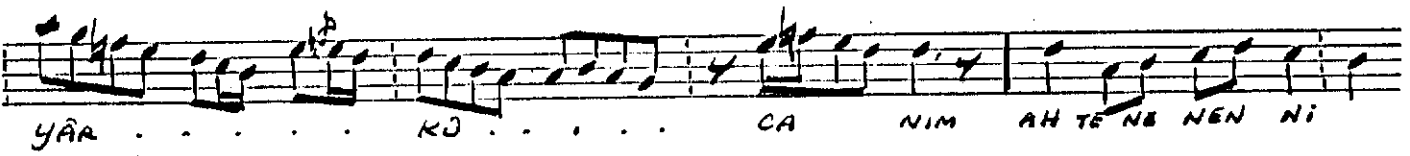
NIMSARKIL



AN EY DE MI SU . . . . . SUB M: HOŞ NE FEN . . .



NA FE i ZÜ . . . . . 2ÜL Fi



YÂR . . . . . KQ . . . . . CA NIM AH TE NB NEN Ni



TE NE NEN NI TE NE NEN NEN NEN NEN NEN NI YÉL LÉ LÉ LÉ LÉ LÉ LÉ



Li - - - - ye le le .. le le .. le le li TE RA le ... le



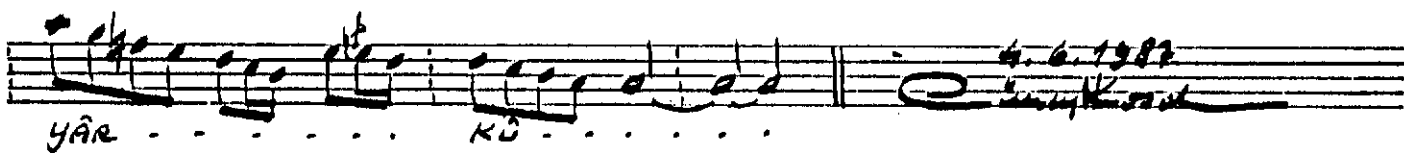
LE .. LE LEL LI      AH YA LA VEL LEL LI . . .      YÖLLÖ LÖLLÖ LEL LEL



LĒL LĒL LI ... A MAN YĒ LĒ LĒ LĒ LĒ LĒ LI YĒ LĒ LĒ LĒ



LEL LEL LEL LI NA FG I 2Ü . . . . . 2ÜL FI



YAR - - - - - KÜ - - - - -

4. 6. 7. 8. 8.